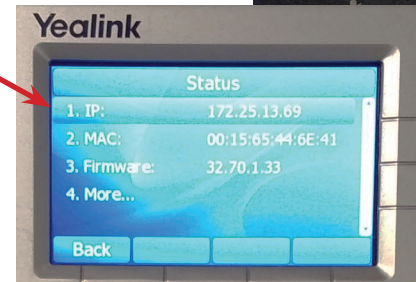
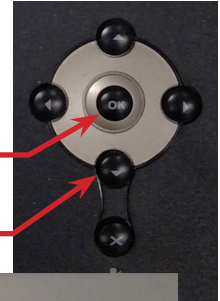


Yealink SIP-T27G:

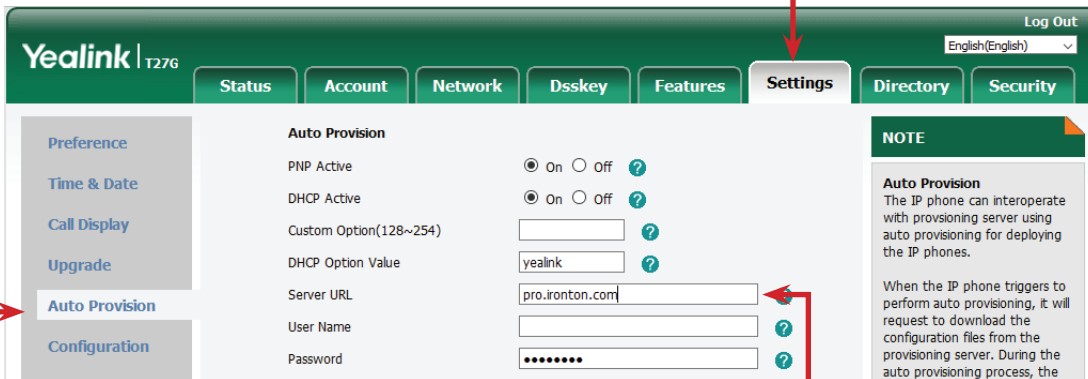
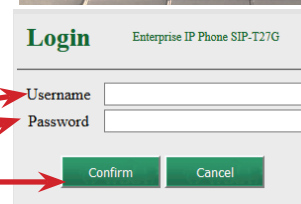
1. Access the Sip Device's IP Address.

- In order to provision the phone efficiently, you will need to log into the phone through its web interface.
- A. Press "OK" button
 - I. or press Menu->Status.
 - II. Press "up" or "Down" arrows or to scroll through the list and view information.
- B. The Phone Status will appear on the Screen.
 - I. Yealink Status Screen
 - a. Write down the phones IP Address.
 - b. If the IP address shows 0.0.0.0
 - 01. Verify all connections to the Network.

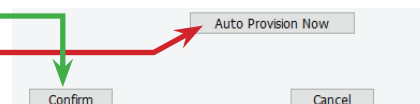


2. Accessing the Web Interface.

- A. Enter the IP address into the web browser address bar.
- B. The Login screen will appear.
 - I. Enter the Username in the text field.
 - II. Enter the Password in the text field.
 - III. Select the Login button.
- C. The Phones Status Screen will open.
 - I. Select the Setting Tab.
 - II. Select Auto Provision in the Left hand Column.



- D. Adding the Provisioning Server URL
 - I. Enter the URL in the Server URL text box.
 - a. pro.ironton.com
- E. Select the Confirm button at the bottom of the page.
- F. Select the Auto Provision Now button.
 - I. The Phone will reboot and download the configuration.
 - II. This process can take up to 10 minutes.
 - III. Do not power down the phone during this process.



• Please Note:

- Provisioning Servers require an association with the Sip Device's MAC address in order to auto provision.
- Contact Tech Support for additional help.