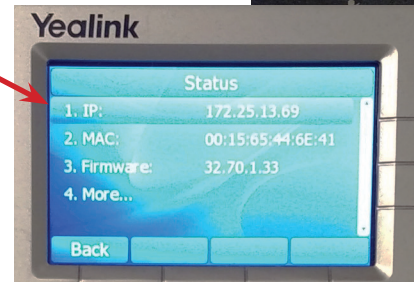
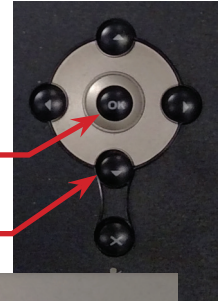


## Yealink SIP-T46G/S:

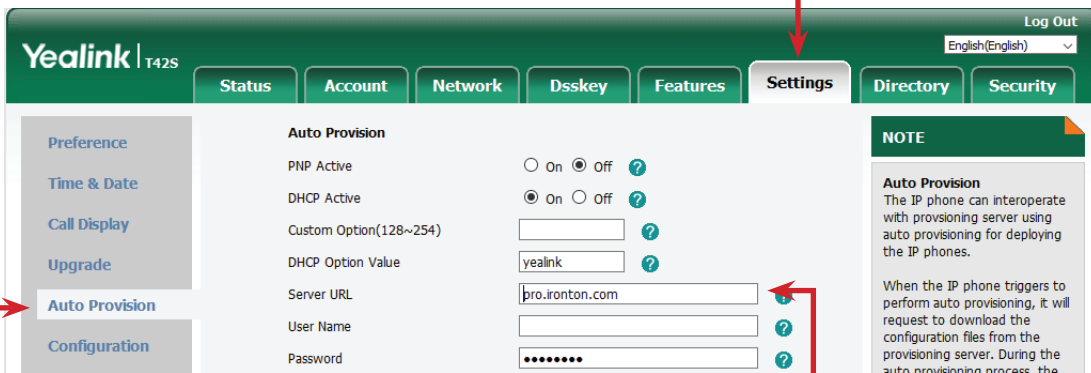
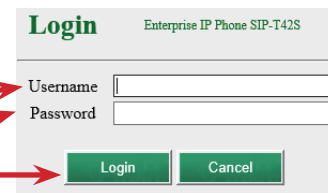
### 1. Access the Sip Device's IP Address.

- In order to provision the phone efficiently, you will need to log into the phone through its web interface.
- A. Press "OK" button
  - I. or press Menu->Status.
  - II. Press "up" or "Down" arrows or to scroll through the list and view information.
- B. The Phone Status will appear on the Screen.
  - I. Yealink Status Screen
    - a. Write down the phones IP Address.
    - b. If the IP address shows 0.0.0.0
      - 01. Verify all connections to the Network.

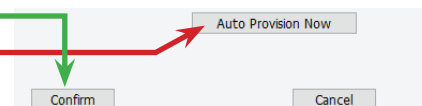


### 2. Accessing the Web Interface.

- A. Enter the IP address into the web browser address bar.
- B. The Login screen will appear.
  - I. Enter the Username in the text field.
  - II. Enter the Password in the text field.
  - III. Select the Login button.
- C. The Phones Status Screen will open.
  - I. Select the Setting Tab.
  - II. Select Auto Provision in the Left hand Column.



- D. Adding the Provisioning Server URL
  - I. Enter the URL in the Server URL text box.
    - a. pro.ironton.com
- E. Select the Confirm button at the bottom of the page.
- F. Select the Auto Provision Now button.
  - I. The Phone will reboot and download the configuration.
  - II. This process can take up to 10 minutes.
  - III. Do not power down the phone during this process.



#### • Please Note:

- Provisioning Servers require an association with the Sip Device's MAC address in order to auto provision.
- Contact Tech Support for additional help.